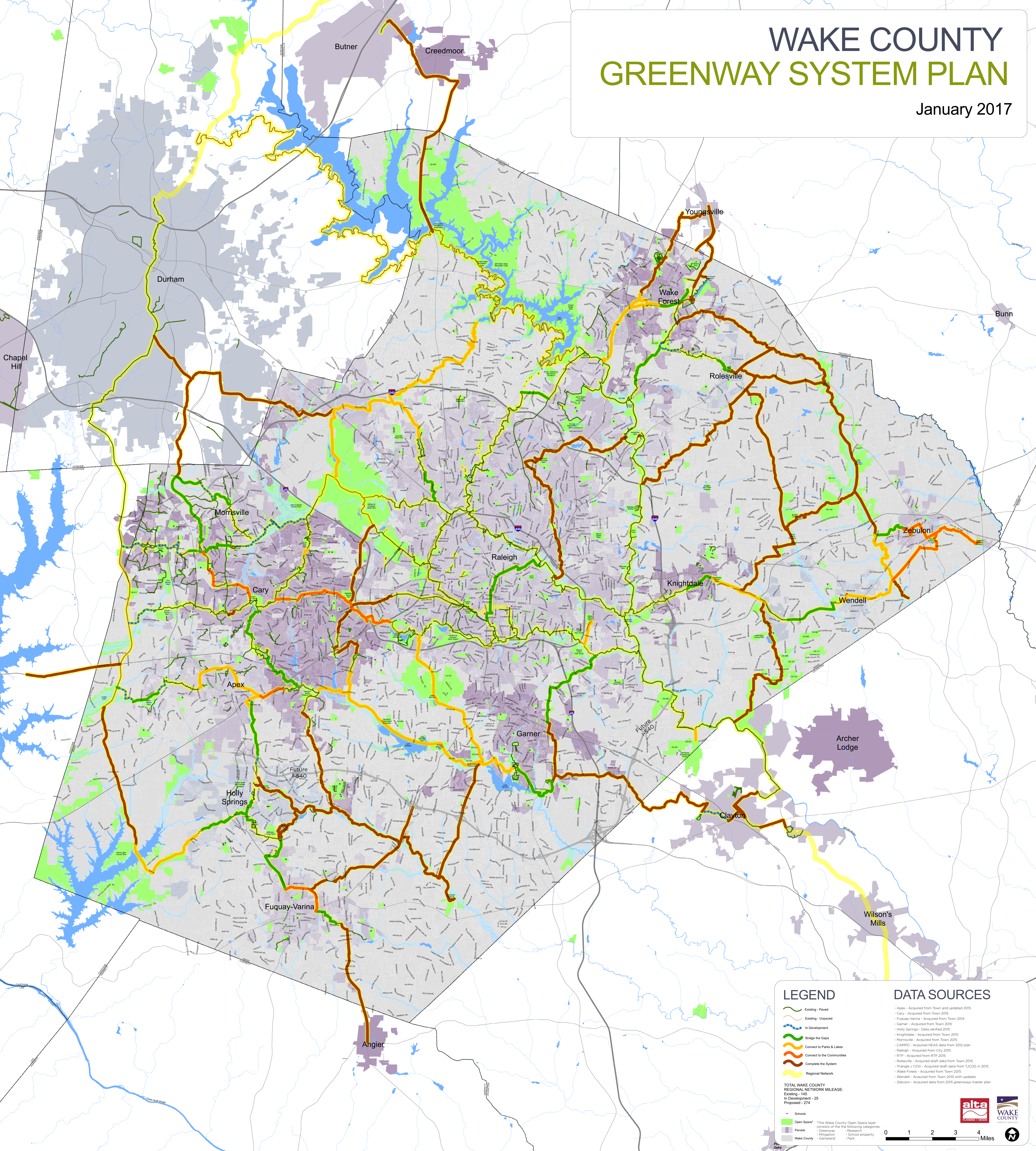


# WAKE COUNTY GREENWAY SYSTEM PLAN

January 2017



### LEGEND

- Existing - Paved
- Existing - Unpaved
- In Development
- Bridge the Gaps
- Connect to Parks & Lakes
- Connect to the Communities
- Complete the System
- Regional Network

**TOTAL WAKE COUNTY REGIONAL NETWORK MILEAGE:**  
 Existing - 145  
 In Development - 25  
 Proposed - 274

- Schools
- Open Space\* \*The Wake County Open Space layer consists of the following categories:
- Greenway
- Wetland
- Research
- Wake County
- Campland
- School property
- Park

### DATA SOURCES

- Apex - Acquired from Town and updated 2015
- Cary - Acquired from Town 2015
- Fuquay-Varina - Acquired from Town 2014
- Garner - Acquired from Town 2015
- Holly Springs - Data verified 2015
- Knightdale - Acquired from Town 2015
- Morrisville - Acquired from Town 2015
- CAMPO - Acquired NEAS data from 2012 plan
- Raleigh - Acquired from City 2015
- RTP - Acquired from RTP 2015
- Rolesville - Acquired draft data from Town 2015
- Triangle J COG - Acquired draft data from TJCOC in 2015
- Wake Forest - Acquired from Town 2015
- Wendell - Acquired from Town 2015 with updates
- Zebulon - Acquired data from 2015 greenways master plan

